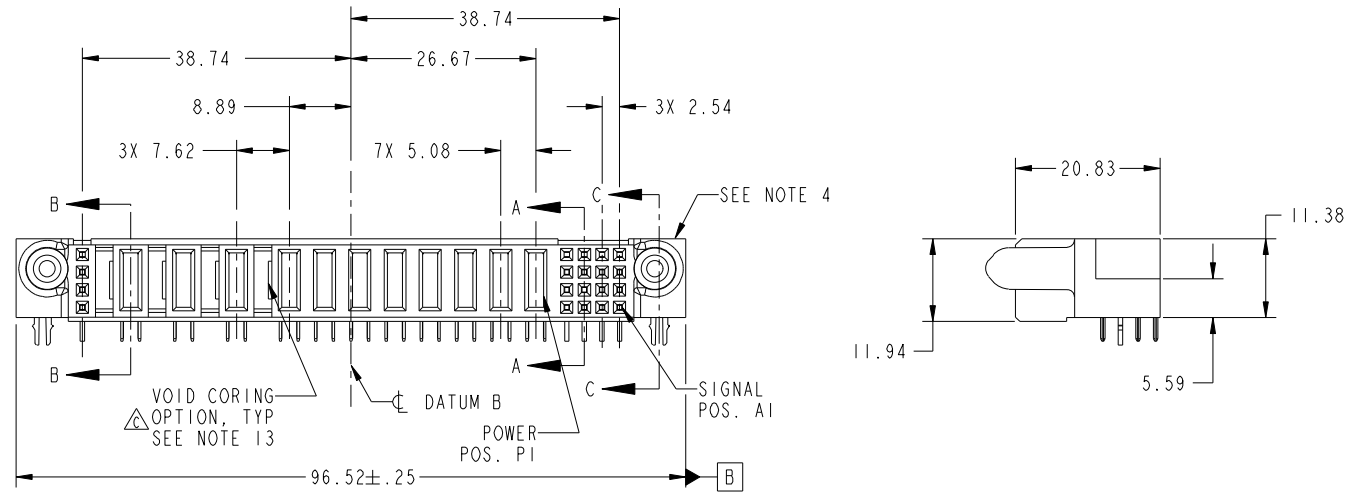
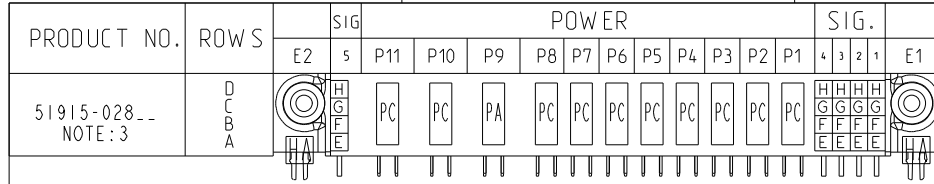


Tous droits strictement reserves. Reproduction ou communication a des tiers interdite sous quelque forme que ce soit sans autorisation écrite du propriétaire. Propriete de c FCI. Droits de reproduction FCI.

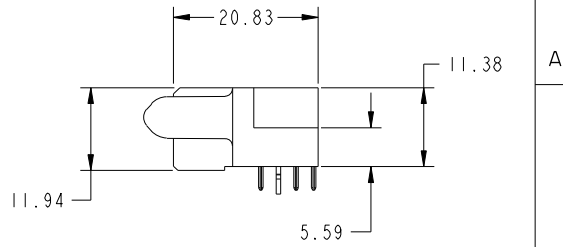


All rights strictly reserved. Reproduction or issue to third parties in any form whatever is not permitted without written authority from the proprietor. Property of FCI. Copyright FCI.



CODE	DIM "M" MATING LENGTH	CONTACT TYPE
E	[N/A]	SIGNAL
F	[N/A]	SIGNAL
G	[N/A]	SIGNAL
H	[N/A]	SIGNAL
PA	[1.07]	POWER
PC	[2.34]	POWER
HA	[N/A]	HOLD-DOWN

mat'l code				SEE NOTE 2		tolerances unless otherwise specified		CUSTOMER	
ltr	ecn no.	dr	date	linear	0.X ± 0.5	projection		COPY	
A	V03-0586	TAB	05/22/03		0.XX ± 0.25	MIM		title	
B	DG05-0365	CS	09/29/05	angles	0.XXX ± 0.10	1:1		16S + 8P + 3ACP + 4S R/A SOLDER RECEPTACLE	
C	DG07-0498	JW	09/15/08		0° + 2°	scale		product family PwrBlade code	
				dr	T. BRUNGARD 05/22/03			size 213	
				enrg	M. MOSTOLLER 05/22/03			dwg no 51915-028	
				chr	M. MOSTOLLER 05/22/03			sheet 1 of 4	
				appd	M. MOSTOLLER 05/22/03			cage code 22526	
sheet index	revision sheet	C 1	C 2	C 3	C 4				



Pro/E

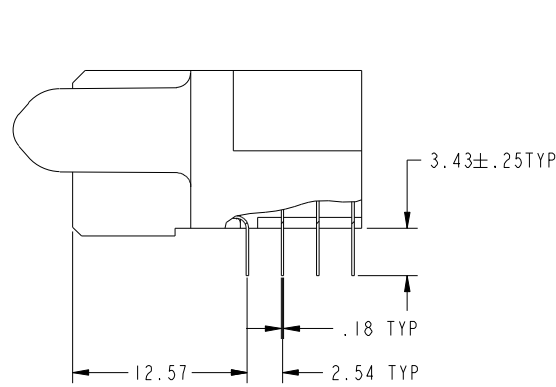
cage code 22526

Tous droits strictement reserves. Reproduction ou communication a des tiers interdite sous quelque forme que ce soit sans autorisation écrite du propriétaire. Propriete de c FCI. Droits de reproduction FCI.

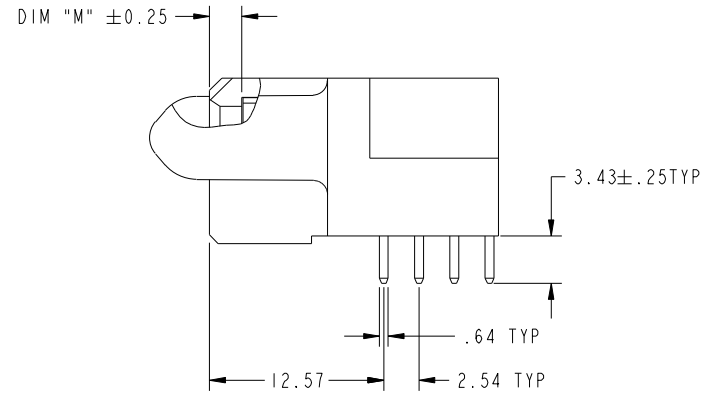


All rights strictly reserved. Reproduction or issue to third parties in any form whatever is not permitted without written authority from the proprietor. Property of FCI. Copyright FCI.

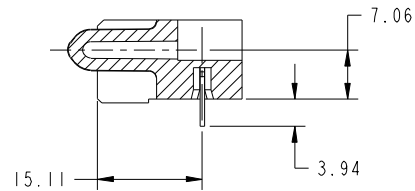
PRODUCT NUMBER  
51915-028--  
NOTE: 3



BROKEN-OUT SECTION A-A  
SCALE 2:1



BROKEN-OUT SECTION B-B  
SCALE 2:1



SECTION C-C

mat'l code		SEE NOTE 2		tolerances unless otherwise specified		CUSTOMER		www.fciconnect.com	
ltr	ecn no.	dr	date	linear	0.X ± 0.5	projection	title		
C					0.XX ± 0.25		16S + 8P + 3ACP + 4S R/A SOLDER RECEPTACLE		
				angles	0.XXX ± 0.10		product family	PwrBlade	code
				dr	0° + 2°	scale	size	A	213
				enrg	T. BRUNGARD 05/22/03	1:1	dwg no	51915-028	sheet
				chr	M. MOSTOLLER 05/22/03			2	
				appd	M. MOSTOLLER 05/22/03				
sheet index	revision sheet								

cage code 22526

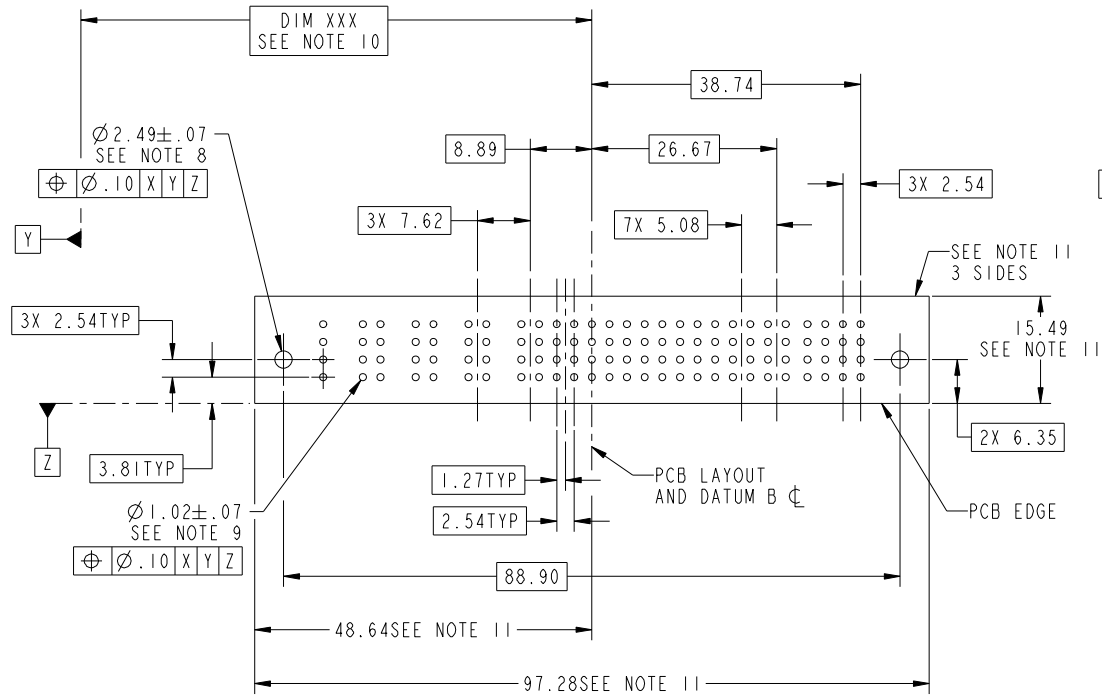
Pro/E

Tous droits strictement reserves. Reproduction ou communication a des tiers interdite sous quelque forme que ce soit sans autorisation écrite du propriétaire. Propriete de c FCI. Droits de reproduction FCI.



All rights strictly reserved. Reproduction or issue to third parties in any form whatever is not permitted without written authority from the proprietor. Property of FCI. Copyright FCI.

PRODUCT NUMBER  
51915-028\_-  
NOTE: 3



mat'l code				SEE NOTE 2		tolerances unless otherwise specified		CUSTOMER		FCJ www.fciconnect.com	
ltr	ecr no.	dr	date	linear	0.X ± 0.5	COPY		projection		title	
C					0.XX ± 0.25	MIM				16S + 8P + 3ACP + 4S R/A SOLDER RECEPTACLE	
				angles	0.XXX ± 0.10	scale		product family		code	
				dr	0° ± 2°	1:1		PwrBlade		213	
				enrg	T. BRUNGARD 05/22/03			size		sheet	
				chr	M. MOSTOLLER 05/22/03			A		3	
				appd	M. MOSTOLLER 05/22/03			51915-028			
sheet index	revision sheet										

cage code 22526

Pro/E

Tous droits strictement reserves. Reproduction ou communication a des tiers interdite sous quelque forme que ce soit sans autorisation écrite du propriétaire. Propriete de c FCI. Droits de reproduction FCI.



All rights strictly reserved. Reproduction or issue to third parties in any form whatever is not permitted without written authority from the proprietor. Property of FCI. Copyright FCI.

PRODUCT NUMBER  
51915-028\_-  
NOTE: 3

NOTES:

1. DIMENSIONS AND TOLERANCES ARE IN ACCORDANCE WITH ASME Y14.5M, 1994 UNLESS OTHERWISE SPECIFIED.

CONNECTOR NOTES:

2. HOUSING MATERIAL: UL 94 V-0 GLASS FILLED  
HIGH-TEMP THERMOPLASTIC  
POWER CONTACT MATERIAL: COPPER ALLOY  
SIGNAL PIN MATERIAL: COPPER ALLOY

3. PLATING:  
SEE ITEM 5 & 6 IN PRINT 10064183 FOR PLATING SPEC OF model\_name:1; model\_name:ILF PRESPECTIVELY

4. MANUFACTURER'S NAME, P/N, AND DATE CODE TO APPEAR ON THIS SURFACE.

5. PRODUCT SPECIFICATION GS-12-149.  
APPLICATION SPECIFICATION BUS-20-067.

6. PACKAGED IN TRAYS.

PCB NOTES:

7. ALL HOLE DIAMETERS ARE FINISHED HOLE SIZE.

8. MOUNTING HOLES, WHERE APPLICABLE, ARE UNPLATED.

9.  $\varnothing 1.151 \pm 0.025$  DRILLED HOLES PLATED WITH  
0.008 MIN SnPb OR Sn OVER 0.03  
TO 0.08 Cu PLATING TO ACHIEVE  
 $\varnothing 1.02 \pm .07$  HOLE.

10. "DIM XXX" TO BE DETERMINED BY THE CUSTOMER.

11. CONNECTOR KEEP-OUT ZONE.

12. A  $\triangle$  SYMBOL WILL BE NEXT TO ANY DIMENSION, VIEW, OR NOTE WHICH HAS BEEN MODIFIED WITH THE CURRENT DRAWING REVISION.

13. THE VOID CORING IN BETWEEN POWER MODULES, SIGNAL MODULES AND END MODULES ARE OPTIONAL AND THE SHAPE MAY BE DIFFERENT FOR OPTIMIZING THE MOLDING PROCESS. THE VOID CORING WILL NOT EFFECT TO PRODUCT FUNCTION.

mat'l code				SEE NOTE 2		tolerances unless otherwise specified		CUSTOMER		FCJ www.fciconnect.com	
ltr	ecn no.	dr	date	linear	0.X ± 0.5		COPY		projection	title	
C					0.XX ± 0.25		MIM			16S + 8P + 3ACP + 4S R/A SOLDER RECEPTACLE	
					0.XXX ± 0.10		← MIM →			product family PwrBlade code	
				angles	0° ± 2°		scale		size		
				dr	T. BRUNGARD	05/22/03	1:1		dwg no		
				enrg	M. MOSTOLLER	05/22/03	A		51915-028		
				chr	M. MOSTOLLER	05/22/03			sheet		
				appd	M. MOSTOLLER	05/22/03			4		
sheet index	revision sheet										

cage code 22526

Pro/E